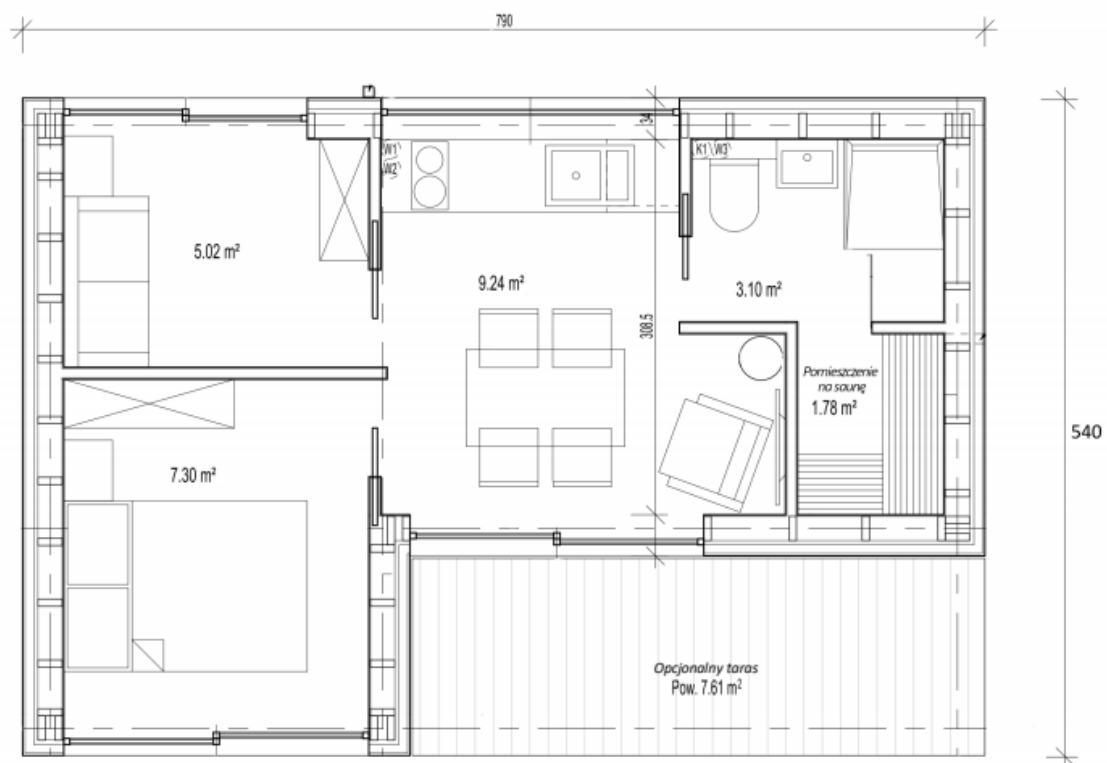
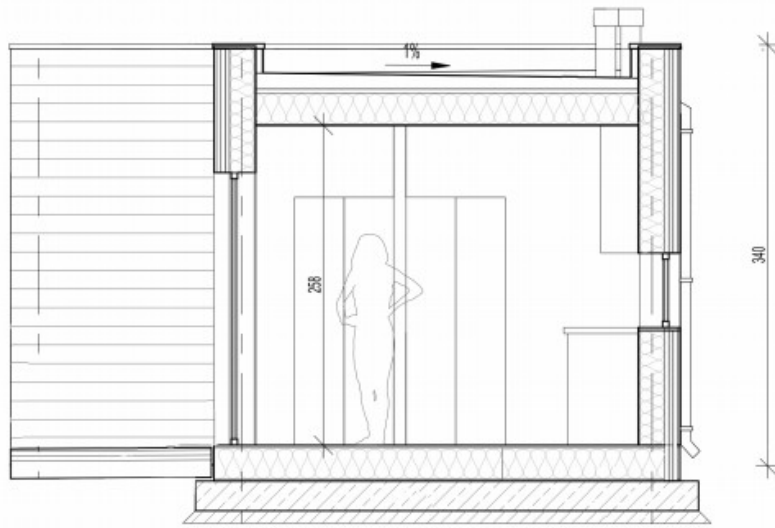


FURU standard modular house - specifications

Typical technical specifications

- Built-up surface area 34.91m²
- Usable surface area 26.44 m²
- Building width 5.4m
- Building length 7.9m
- Building height 3.40m
- Overground floors 1
- Flat roof
- Price: PLN 149 000 net





METHOD OF EXECUTION, CONSTRUCTION AND MATERIAL SOLUTIONS AND INSTALLATIONS

Construction solutions

Building in timber frame technology, wooden roof. The foundation is planned on concrete point foundations, in Client's scope.

Material solutions and essential elements of the building.

- Internal walls
Load-bearing walls designed in timber frame technology, I-beam structure. Interior finish with drywalls. Structure filled with wood wool, in inaccessible places with mineral wool, 20cm thick.
- Roof
Flat roof, timber frame technology with I-beams. Interior finish with drywalls. Structure filled with wood wool, in inaccessible places with mineral wool, total thickness 25cm. Covered with a PVC membrane. Gutters.
- Foundations
Foundation walls on reinforced concrete. Foundation depth below the ground frost depth. Foundations in Client's scope.
- Floor above ground
The floor designed as timber frame structure, made of I-beams, with OSB sheathing. Floor insulation with 20cm thick mineral wool.
- Façade
Finished with spruce façade boards in a vertical pattern, protected with stain in the colour of client's choice.



WESTATRE

- Windows and doors
Exterior window joinery - PVC tilt-and-turn with triple glazing package, steel entrance doors.

Installations:

- Electrical system, sockets and switches. Electricity supply per separate elaboration, in Client's scope.
- Plumbing system, terminated with plugs on the approaches to sanitary appliances, without fittings. Water supply and discharge of domestic sewage per separate elaboration, in Client's scope.
- Gravity ventilation and mechanical ventilation in the bathroom.



Sample arrangement (arrangement not included in the price).