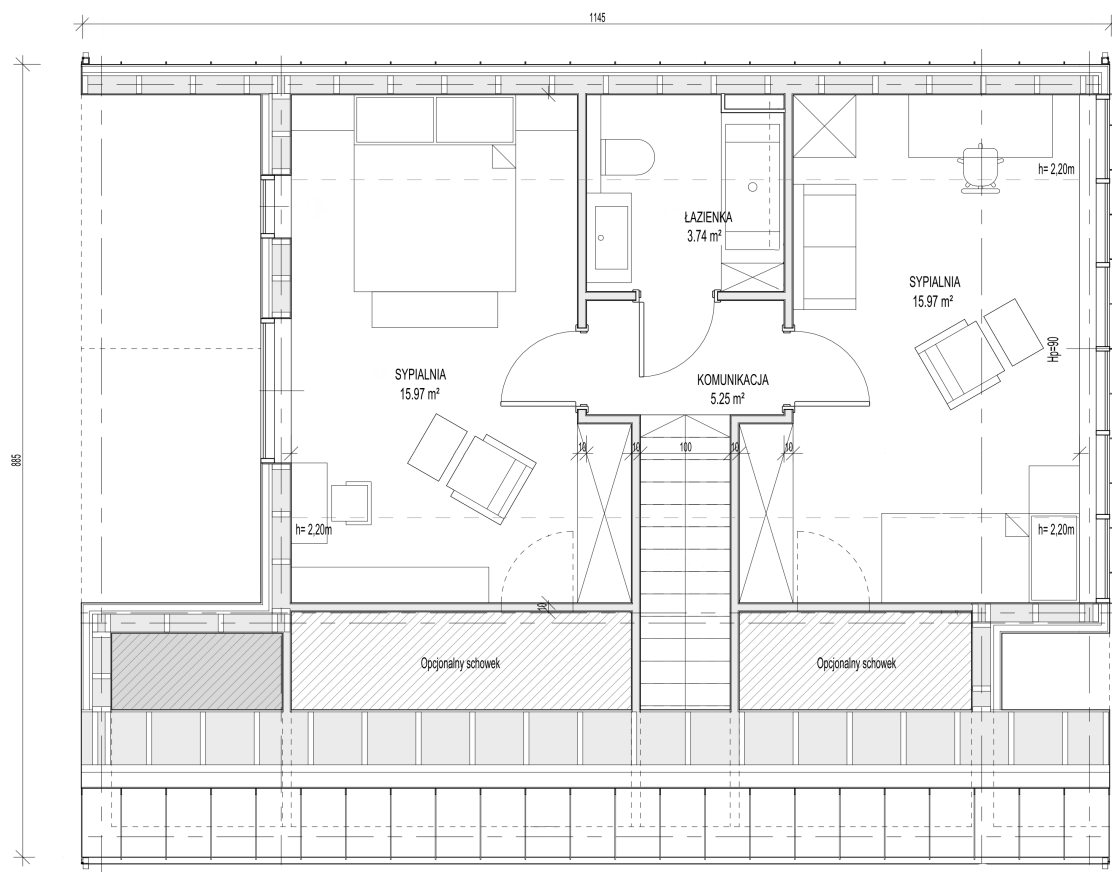


## LIND modular house - specifications

### Typical technical specifications

- Built-up surface area 86.54m<sup>2</sup>
- Usable surface area 110 m<sup>2</sup>
- Total floor surface area 116.95m<sup>2</sup>
- Building width 8.85m
- Building length 11.45m
- Building height 6.77m
- Price: PLN 419 000 net





**RZUT PODDASZA**

## METHOD OF EXECUTION, CONSTRUCTION AND MATERIAL SOLUTIONS AND INSTALLATIONS

### Construction solutions

Building in timber frame technology, wooden roof. The foundation is planned on concrete foundation, in Client's scope

Material solutions and essential elements of the building.

- Internal walls
  - Load-bearing walls designed in timber frame technology, I-beam structure. Interior finish with drywalls. Structure filled with wood wool, in inaccessible places with mineral wool, 20cm thick.
  - Partition walls in 10cm wood construction. Wall finish with drywalls. Structure filled with mineral wool.
- Roof
 

Gable roof, pitch angle 25°, timber frame technology with I-beams. Interior finish with drywalls. Structure filled with wood wool, in inaccessible places with mineral wool, total thickness 25cm. Covered with standing seam metal sheets. Gutters.
- Foundations
 

Foundations in Client's scope.



# WESTATRE

- Façades

Finished with spruce façade boards in a vertical pattern, protected with stain in the colour of client's choice and standing seam metal sheets.

- Windows and doors

Exterior window joinery - PVC tilt-and-turn with triple glazing package, steel entrance doors.

- Pine wood stairs.

## Installations:

- Electrical system, sockets and switches. Electricity supply per separate elaboration, in Client's scope.
- Plumbing system in walls, terminated with plugs on the approaches to sanitary appliances, without fittings. Water supply and discharge of domestic sewage per separate elaboration, in Client's scope.
- Installation of central heating system, boiler, radiators and supply of heat energy per separate elaboration, in Client's scope.
- Gravity ventilation and mechanical ventilation in the bathroom.



Sample arrangement (arrangement not included in the price).

