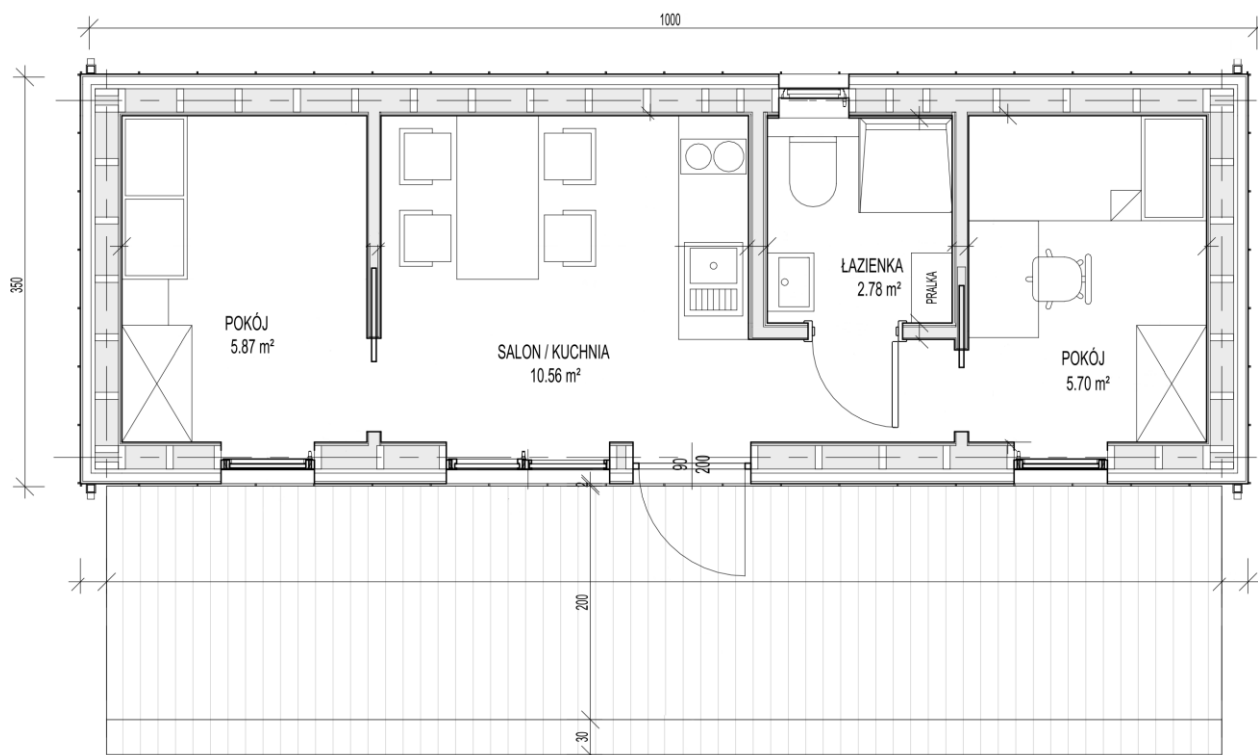


## SKOG modular house - specifications

### Typical technical specifications

- Built-up surface area 35m<sup>2</sup>
- Usable surface area 24.92 m<sup>2</sup>
- Building width 3.5m
- Building length 10m
- Building height 3.66m
- Price: PLN 184 900 net



## METHOD OF EXECUTION, CONSTRUCTION AND MATERIAL SOLUTIONS AND INSTALLATIONS

### Construction solutions

Building in timber frame technology, wooden roof. The foundation is planned on concrete point foundations, in Client's scope.

Material solutions and essential elements of the building.

- Internal walls  
Load-bearing walls designed in timber frame technology, I-beam structure. Interior finish with drywalls. Structure filled with wood wool, in inaccessible places with mineral wool, 20cm thick.
- Roof  
Gable roof, pitch angle 28°, timber frame technology with I-beams. Interior finish with drywalls. Structure filled with wood wool, in inaccessible places with mineral wool, total thickness 25cm. Covered with standing seam metal sheets. Gutters.
- Foundations  
Point foundations, concrete, reinforced. Foundation depth below the ground frost depth. Foundations in Client's scope.
- Floor above ground  
The floor designed as timber frame structure, made of I-beams, with OSB sheathing. Floor insulation with 20cm thick mineral wool.
- Façades  
Finished with spruce façade boards in a vertical pattern, protected with stain in the colour of client's choice and standing seam metal sheets.
- Windows and doors  
Exterior window joinery - PVC tilt-and-turn with triple glazing package, steel entrance doors.

### Installations:

- Electrical system, sockets and switches. Electricity supply per separate elaboration, in Client's scope.
- Plumbing system, terminated with plugs on the approaches to sanitary appliances, without fittings. Water supply and discharge of domestic sewage per separate elaboration, in Client's scope.
- Gravity ventilation and mechanical ventilation in the bathroom.



Sample arrangement (arrangement not included in the price).