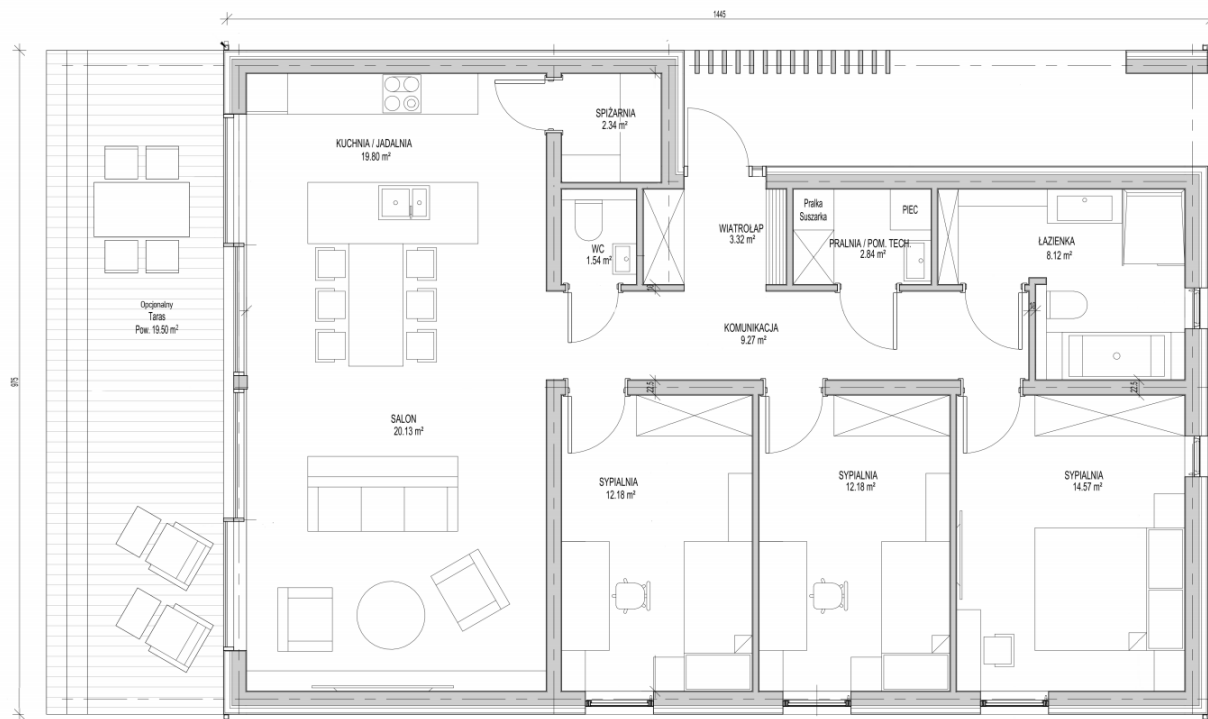


ALM modular house - specifications

Typical technical specifications

- Built-up surface area 127.61 m²
- Usable surface area 106.28 m²
- Building width 9.75m
- **Building length 14.45m**
- Building height 5.09m
- Price: PLN 437 000 net





METHOD OF EXECUTION, CONSTRUCTION AND MATERIAL SOLUTIONS AND INSTALLATIONS

Construction solutions

Building in timber frame technology, wooden roof. The foundation is planned on concrete foundation, in Client's scope

Material solutions and essential elements of the building.

- Internal walls
 - Load-bearing walls designed in timber frame technology, I-beam structure. Interior finish with drywalls. Structure filled with wood wool, in inaccessible places with mineral wool, 20cm thick.
 - Partition walls in 10cm wood construction. Wall finish with drywalls. Structure filled with mineral wool.
- Roof

Gable roof, pitch angle 20°, timber frame technology with I-beams. Interior finish with drywalls. Structure filled with wood wool, in inaccessible places with mineral wool, total thickness 25cm. Covered with standing seam metal sheets. Gutters.
- Foundations

Foundations in Client's scope.
- Façade

Finished with spruce façade boards in a vertical pattern, protected with stain in the colour of client's choice and standing seam metal sheets or white mineral plaster with stained spruce board elements.
- Windows and doors

Exterior window joinery - PVC tilt-and-turn with triple glazing package,
steel entrance doors.

Installations:

- Electrical system, sockets and switches. Electricity supply per separate elaboration, in Client's scope.
- Plumbing system in walls, terminated with plugs on the approaches to sanitary appliances, without fittings. Water supply and discharge of domestic sewage per separate elaboration, in Client's scope.
- Installation of central heating system, boiler, radiators and supply of heat energy per separate elaboration, in Client's scope.
- Gravity ventilation and mechanical ventilation in the bathroom.



Sample arrangement (arrangement not included in the price).

